

# Trail guide

## The novecentist summer houses of Valldoreix

| on foot | point to point | length | duration | difficulty | elevation gain  |
|---------|----------------|--------|----------|------------|-----------------|
|         |                | 6,4 km | 3 hours  | leasy      | + 140 m - 140 m |

**Route starting point:** Plaça de l'Estació, 10, Valldoreix

Valldoreix FGC station

**Coordinates of the starting point of the route:**

Lat. 41.457852° - Long. 2.068145°

UTM: 31T 422174.00 m E - 4590004.00 m N

**Itinerary description:**

We'll start at the Valldoreix station of the Ferrocarrils de la Generalitat de Catalunya (FGC) railway and head up a flight of stairs that brings us to the church of Sant Cebrià. Once past the church, we'll reach Plaça Can Cadena and continue along Rambla de Mossèn Jacint Verdaguer. Soon, we'll find the first point of interest on this route: the Antoni Caballé house. It's particularly noteworthy because of its noble, classicist forms. We'll continue along the Rambla; if we pay close attention we'll notice several houses in the novecentist style, each with its peculiarities.

We'll pass Plaça Pompeu Fabra and continue on to Plaça Mas Roig. Once there, we'll head down Avinguda de Mossèn Jacint Verdaguer and turn right on Passeig de l'Oreneta, which will take us to Plaça dels Ocells. Here we'll see several examples of period houses. Next, we'll follow Avinguda Ramon Escayola, turn left onto Passeig del Rossinyol and right onto Passeig Crisantem. Here we'll find another notable building, Villa Montserrat. It's a good example of eclecticism, with several other unclassifiable elements. When we reach Passeig del Nard, we'll turn left. Here, it's important to stay alert; we're reaching the area with the greatest concentration of novecentist houses. Casa Buenos Aires is particularly noteworthy. We'll turn right onto the Rambla del Jardí. This Rambla is a great place for a stroll, and contains some excellent examples of novecentist houses. We'll then turn right onto Avinguda Joan Borràs, named in honour of one of the promoters of the first urban developments in Valldoreix. We'll turn left and continue on until we reach an interesting group of three unmistakable houses. We'll continue our route down the short and narrow Carrer Assutzena, where we'll find one of the creations of architect Enric Catà. We'll turn left onto Passeig del Rosari and continue on to Rambla del Jardí, where we'll turn right. We'll then continue on until we find Passeig Llesamí, where we'll turn right again. Our third point of interest is located on this street: the Casa de Xocolata or "Chocolate House", which gets its name from the reddish sandstone used in it. Next, we'll head down Avinguda Joan Borràs and turn left onto Avinguda Ramon Escayola. These were the first two streets built in this urban development. Here, we'll find a group of three spectacular houses, the first of which is our final point of interest. The Bartomeu Pujol house is extremely well-preserved. The roof is especially noteworthy; the interplay of roof forms, all supported by wooden corbels, highlights the volumetric composition of the building. We'll continue along Avinguda Alcalde Ramon Escayola until we reach Passeig de Rubí, where we'll turn right. Here, we'll find some additional novecentist style houses. This street will take us back to our starting point, the FGC station of Valldoreix.

**Points of interest:**

### Antoni Caballé House

This building has been declared an Asset of Local Cultural Interest (BCIL).

It dates from 1928 and is in the classicist style, and it stands out because of its imposing presence on a large lot on the Rambla de Mossèn Jacint Verdaguer.

According to the project by Architect Josep Alsina i Botet, the original building had a façade with three bays, with two windows on the ground floor of each. The central entrance, with the staircase and a very elaborate atrium, was topped by a pergola with double Doric columns, in two sections. This pergola was later replaced by an enclosed structure framed by Doric pilasters.

Subsequent additions have widened the building, using façade elements copied from or inspired by the original project. In these later phases, the semi-circular arches were transformed into round arches, and the elaborate double balconies on the original ground floor have become arched openings without the surrounding decorations.

Although the expansions have added excessive volume to the building, the classicist façade is still preserved around the entrance.

The balustrades present on the façades, on the recently added semi-basement structures and on the retaining wall on Rambla Mossèn Jacint Verdaguer serve to unify the ensemble.

Several unfinished Corinthian capitals sit in the garden. They deserve special protection because of their size and workmanship although they may simply be left in place, forgotten in the garden.

### Curiosities

*The current building is the result of several enlargements of the original home of Antoni Caballé, who built several houses in Valldoreix in the 1930s with the help of architect Josep Alsina i Botet.*

### Villa Montserrat

This is a good example of an eclectic building, combining novecentist elements with others that are completely unclassifiable. The project by architect Josep Ros i Ros included a façade that was novecentist in the absolute symmetry of its elements but Modernista and eclectic in its details.

The most prominent feature of the villa is the extravagant composition of the roof. It includes exaggerated eaves, and folded a section that projects out over the name of the building and a maiolica tile depiction of Montserrat mountain. This depiction is framed by a winged, pseudo-naturalist shape.

The openings on the ground floor are elegant three-centred arch windows, surrounded by a very simple moulding on the jambs and arches. The openings on the first floor and attic are a row of eight windows, with two additional windows on either side. What makes this building unique are its eclecticism and its exaggeratedly contrasted forms. The surrounding fence is the standard model from J. Borràs' development.

### Curiosities

*Architect Josep Ros i Ros (?-Martorell 1951) is the author of several Modernista and novecentist buildings such as Caves Freixenet in Sant Sadurní d'Anoia or the Modernista houses of Parellada and Café del Progrés in the city of Martorell.*

### La Casa de Xocolata

This villa is noteworthy because of a series of architectural elements made with reddish sandstone that serve as the main motif in this architectural composition. An extremely imaginative display, it combines and overlaps ideas and styles to the point of extravagance, giving it the typical appearance of a haunted house.

The red sandstone, which dates geologically to the Upper Triassic (Buntsandstein), comes from the quarries near Can Jardí, between Valldoreix and Castellbisbal, where it was exploited as an ornamental stone (in competition with the Figaró quarries, where it also abounds). This stone was also crushed to make the clay for tennis courts.

As an ornamental stone, Buntsandstein can only be cut smoothly in the direction of the sediment bed and given a rough perpendicular cut since, being a disaggregated stone, it is not suitable for delicate work like moulding. Nevertheless, the stereotomy of this stone, as well as the extremely delicate quartering in the skirting, the front steps, framed openings or vertical edges all make this extraordinary of particular architectural value.

The current house is extremely loyal to the design by architect Domènec Sugrañes, who drew the different red stone elements that give the building's façade its character in great detail.

### Curiosities

*Domènec Sugrañes i Gras (Reus 1878-Barcelona 1938) became a licensed architect on 2 August 1912. He assisted Antoni Gaudí with La Pedrera, Bellesguard and the Sagrada Família. He designed the building on the corner of Carrer Tuset and Avinguda Diagonal in Barcelona, Villa Bonet in Salou and, together with architect Ignasi Mas i Morell, the Plaza de Toros Monumental in Barcelona.*

### Bartomeu Pujol House

This house is particularly noteworthy because of its roof, where the interplay of forms supported by wooden corbels highlights the volumetric composition of the building.

The building has a square floor plan with a bow window-shaped terrace. The lintels over the openings and the false cornerstones are made of moulded mortar meant to imitate rough stone. In the lateral windows, the transoms are in the shape of a Tudor arch.

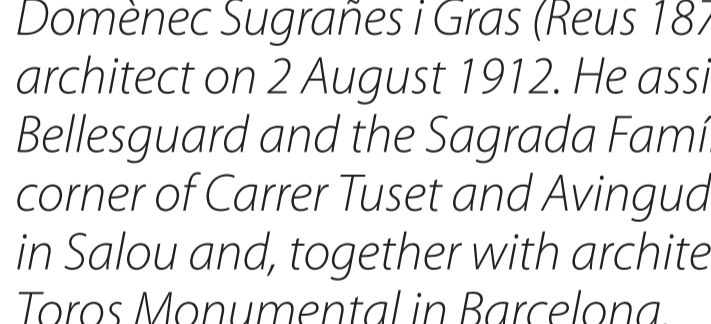
Above the ground floor sits an imposing square lookout with groups of four round windows on the four façades.

The fence, which sits atop a retaining wall, is typical of the development promoted by J. Borràs and is present in several homes in Valldoreix.

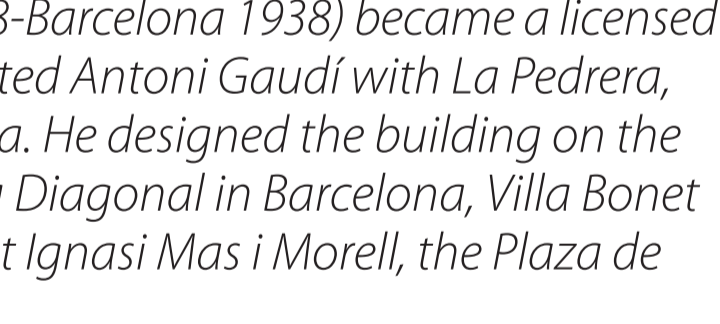
The building is part of a set of houses built by Joan Borràs between 1920 and 1940 on the former Can Lluñell estate. They sit on the following streets: Avinguda de Joan Borràs, Avinguda Ramon Escayola, Passeig del Rosari, Passeig del Nard, and Passeig del Crisantem.

### Curiosities

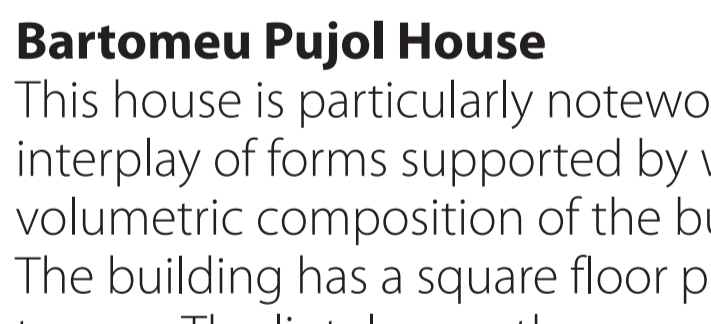
*Josep Graner i Prat, general contractor and Modernista architect, designed the Fajol House or Casa de la Papallona ("Butterfly House") at 20 Carrer Llançà in Barcelona, and the Leandre Vidal houses on Carrer Fraternitat in Barcelona's Gràcia neighbourhood. He was the municipal general contractor for the town council of Montcada i Reixac. Several of the buildings he designed have been included in the architectural catalogue of Sant Cugat del Vallès.*



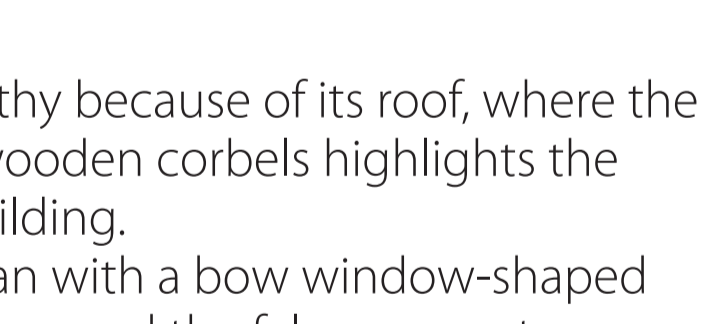
Antoni Caballé House



Villa Montserrat

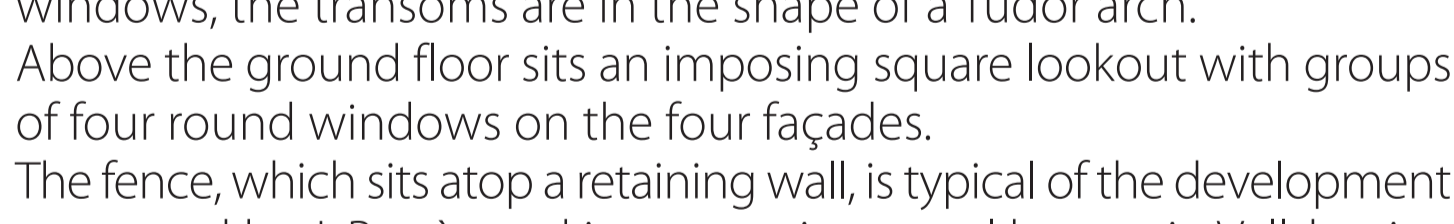


La Casa de Xocolata



Bartomeu Pujol House

metres



kilometres

### Downloads

Topographical map 1:10,000 format: [kmz](#) (12 Mb)

Route The novecentist summer houses of Valldoreix

formats: [kmz](#) | [gpx](#)



AJUNTAMENT DE  
**SantCugat**